

1090 SERIES

(Manufacturing/Sample drawing)

ECN. DATE

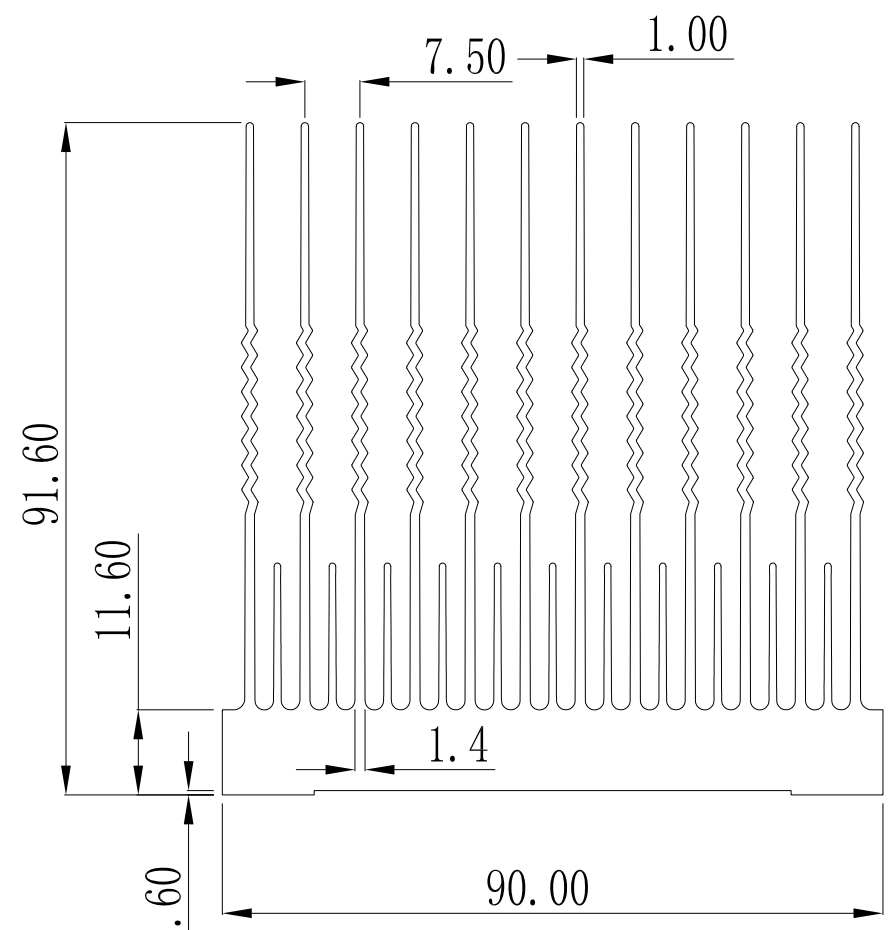
ECN. SYMBOL

REV.

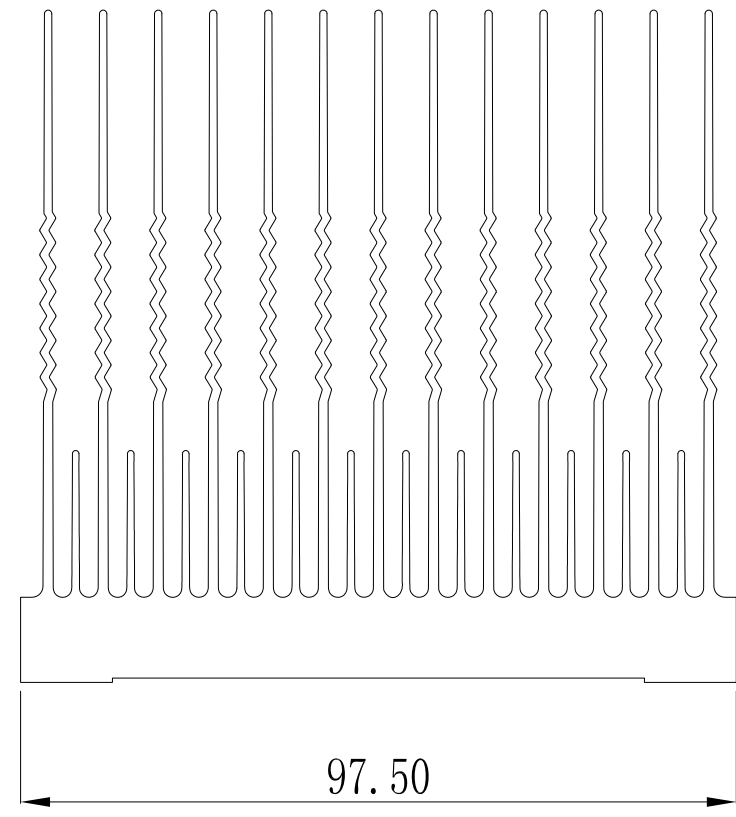
NOTE



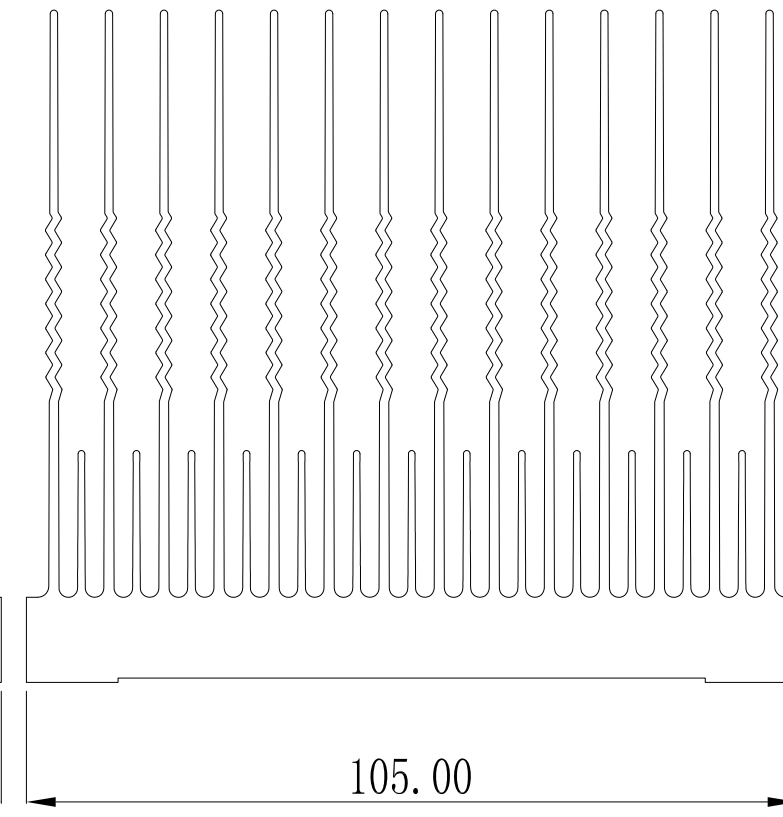
PROPRIETARY AND CONFIDENTIAL: THE INFORMATION CONTAINED IN THIS DRAWING IS THE SOLE PROPERTY OF GETEC INDUSTRIAL, ANY REPRODUCTION IN PART OR AS A WHOLE WITHOUT THE WRITTEN PERMISSION OF GETEC INDUSTRIAL IS PROHIBITED.



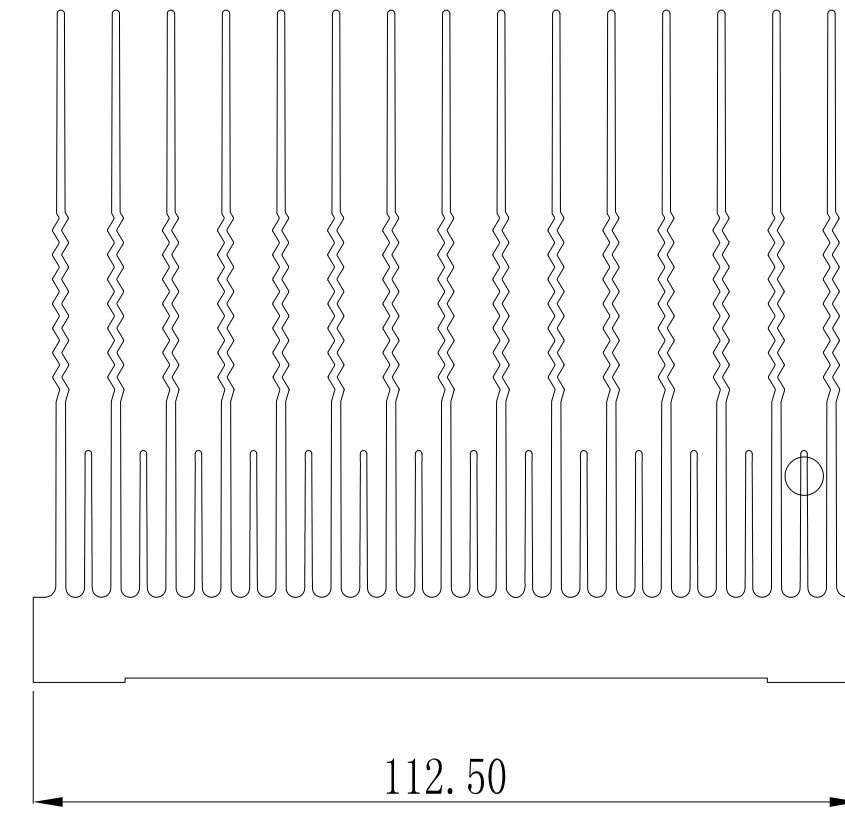
1090-90 2400.0mm*2.78
6.67M/KG



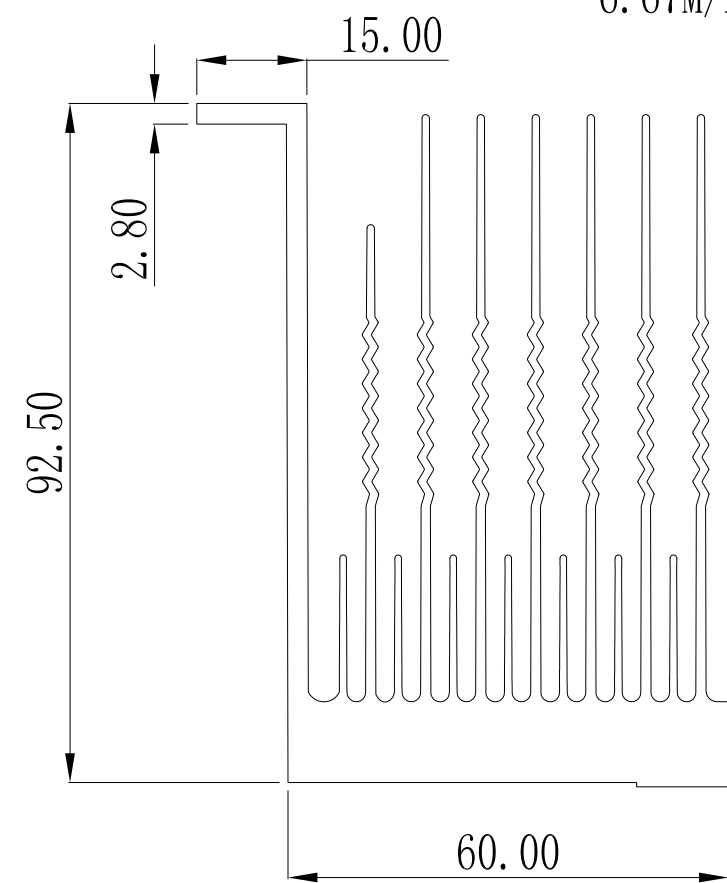
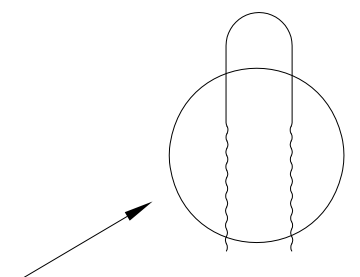
1090-97.5 2600.6mm
7.23M/KG



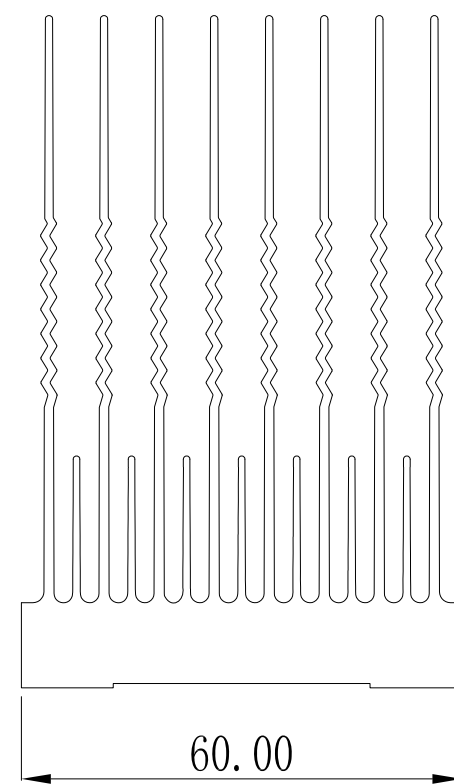
1090-105 2801.0mm
7.79M/KG



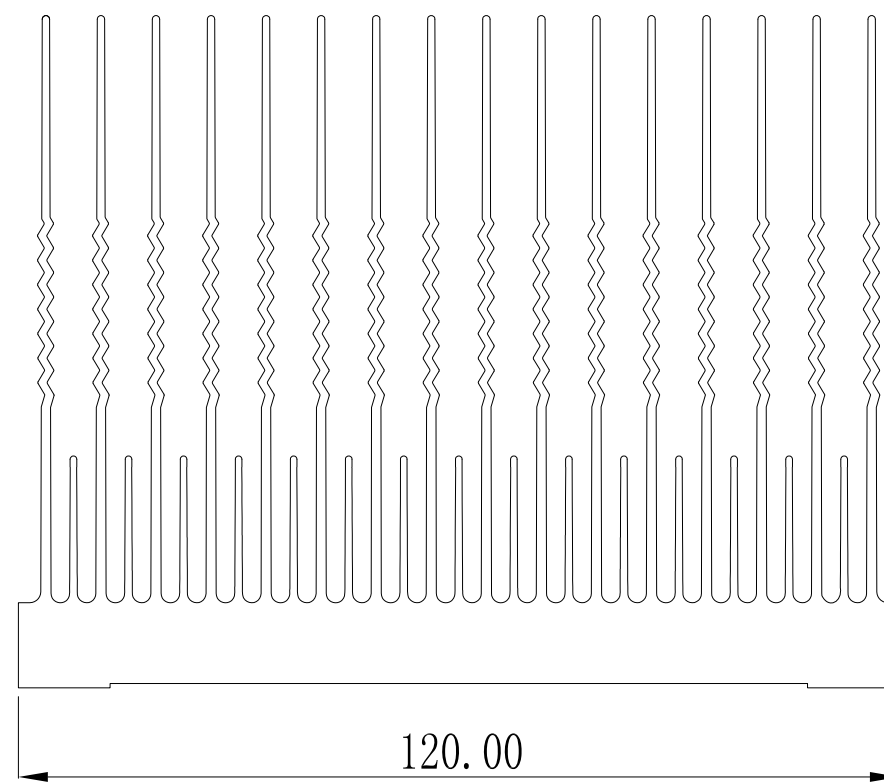
1090-112.5 3001.4mm
8.34M/KG



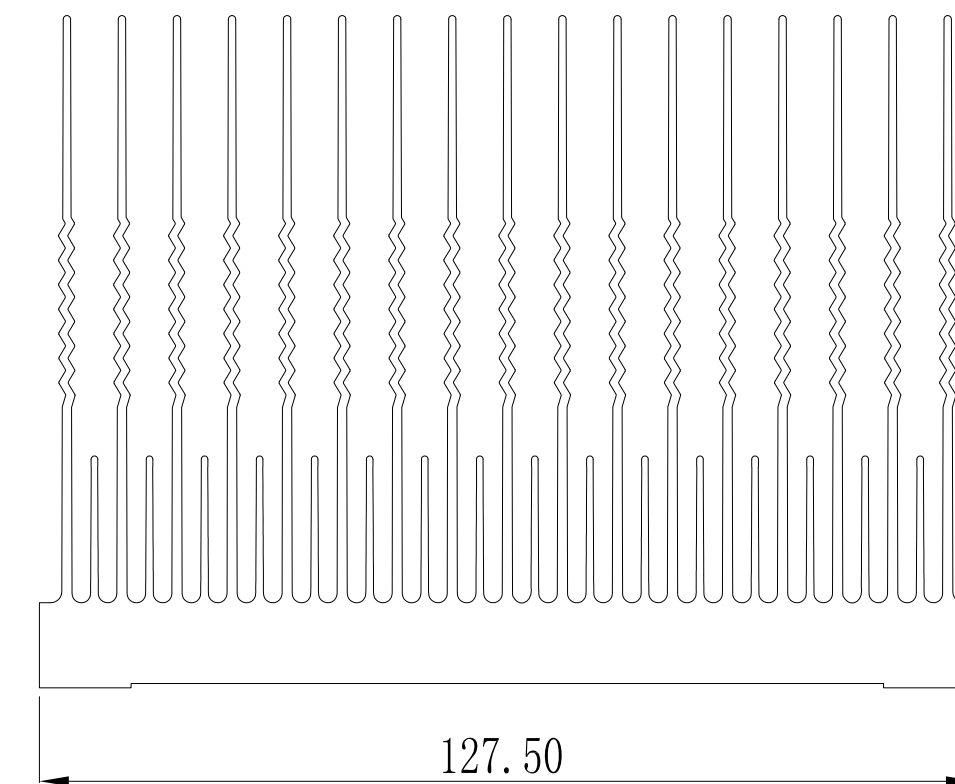
1090-60-耳朵
1740.6mm
4.83M/KG



1090-60
1598.7mm
4.44M/KG



1090-120 3201.4mm
8.90M/KG



1090-127.5 3402.0mm
9.50M/KG

APP.		DATA	2012.09.03	A. W.	**** mm ²	**** KG.M	
APP.		HARDNESS	11°~13°	PERI.		SCALE 1:1	PART NO. :
CHK.		TOLERANCES DIMENSIONS ANGELES				⊕	CTM P. N.:
DAW.		.xx±0.2 .xxx±0.1 ±1°				MATERIAL	:AL 6063 UNIT:mm A0